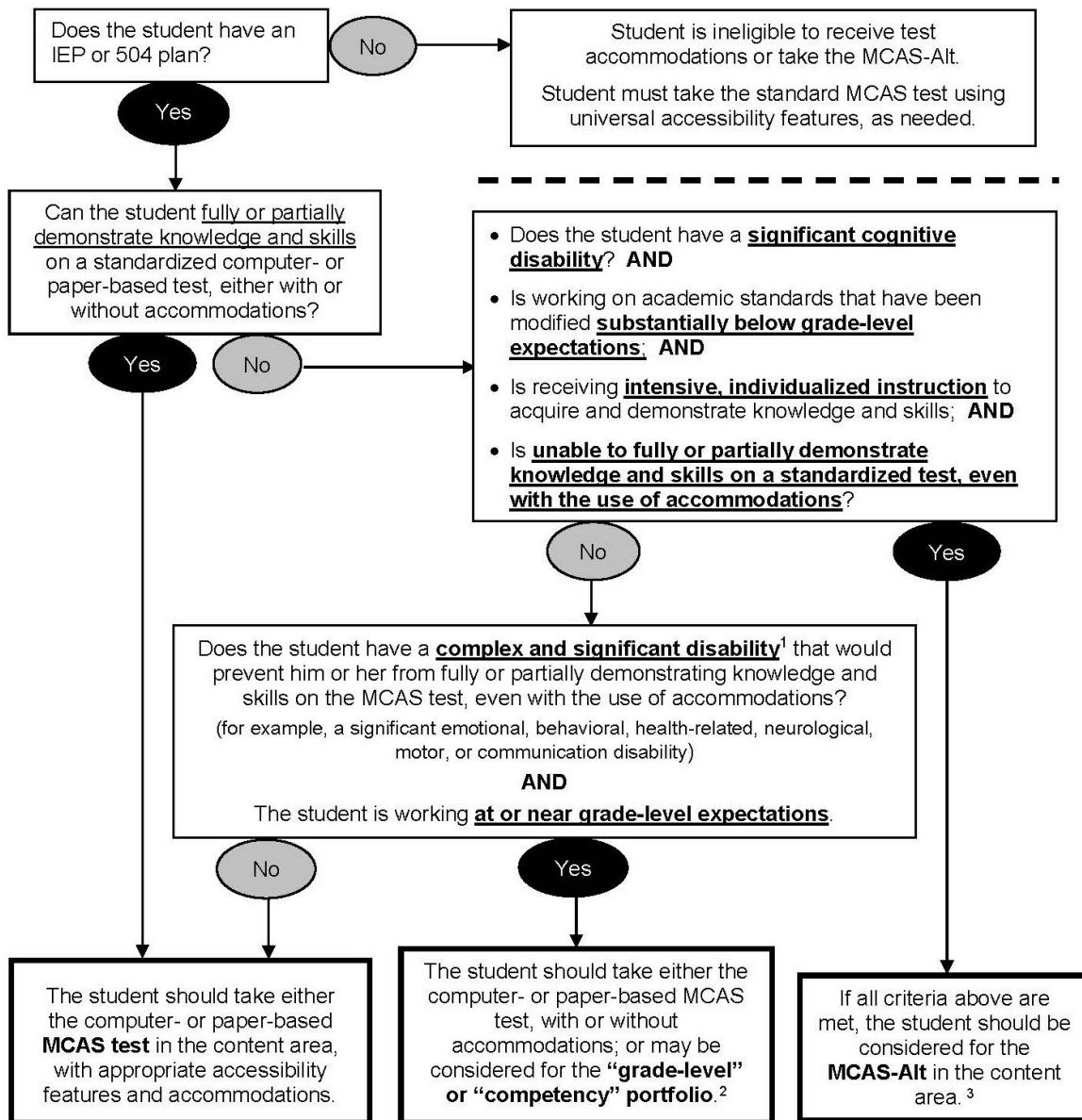


APPENDIX T
DECISION-MAKING TOOL FOR
MCAS-ALT PARTICIPATION

Decision-Making Tool for MCAS Participation by Students with Disabilities

The decision flowchart shown below may be useful to IEP teams and individuals responsible for developing 504 plans to make *annual* decisions regarding appropriate student participation in MCAS. Separate decisions must be made in each content area being assessed: ELA, mathematics, and science and technology/engineering.



¹ See the [Educator's Manual for MCAS-Alt](#) for additional details on and examples of “complex and significant disabilities.”

² See the [MCAS Grade-level and Competency Portfolio Manual](#) for details on submission of “grade-level” and “competency” portfolios.

³ Students who take the MCAS-Alt in high school will not earn a Competency Determination in the assessed subject and therefore will not be eligible to earn a high school diploma.